

## Wood characteristics

Wood has a number of specific characteristics, which are natural and inherent to it. The biggest practical moment is, that the wood has its specific colour and density. Also the effect of humidity result.

On longitudinal cut most of the wood has a nice, decorative and often very appreciable cut-out which is called texture.

Wood has a specific scent. The scent is given by attars, resins and fermented substances. New-mown wood gives a better scent.

One very important attribute of the wood is to store and easily return the water.

The **bad** attribute is to bloat and dry out. When wood is drying, it shrinks its linear measurements and volume decrease. When the wood absorbs humidity its linear measurements and volumes increase.

The **downsides** of the wood are that it chaps and warps. When wood dries, humidity firstly evaporates from the surface, outer layers and only after from deeper inside layers. That is why, when the outer layers start to shrink, the inside layers, due to bigger wetness, oppose to drawing. Firstly the surface is chapping, next the inside. When wood dries it can have longitudinal or cross warp. Longitudinal: When dried straight balk bends, flat plank twists and gets the form of the propeller. Cross: When the form of woods' cross-section is changing, quadratic balk becomes the balk with rectangular or rhomb cross-section, flat plank becomes hunched.

Wood has a number of specific technological characteristics. It easily splits along the fibre, nicely holding metal fastenings, it can flex easily, is durable to depreciation. Screws hold in the wood extremely well. Screws have a much better grip with the wood than the nails, and they do not cut the strings.

**Defectuality of the wood (taints):** branchy wood, cracks, subnormal structure, infractions made by fungus and insects. Wood, as it is a product of biological origin, is so varied, that the concepts "normal wood" or "subnormal wood" often has a conditional complexion. On sawn-on wood and sawn timber assortment following fungus taint may occur: mould, brownness. Mould funguses generally do not affect physical and mechanical characteristics of the wood.

When wood is affected by biological (fungus), physical (environmental temperature and humidity) and chemical factors – it decomposes.

Wood may last a long time, but volatile humidity and temperature of the environment reduces its lasting, because of that, a variety of cracks, which can damage the woods' integrity, upspring, that facilitates woods' infection with fungus, and its rapid development. The older the wood is, the better its timbers durability is.

The most effective way to protect the wood from insect and decay is to soak it with special preparations, which are toxic to fungus and insects, - antiseptics.

ATTENTION: These numbers correspond to numbers in the parts list you will receive in your log cabin booklet. Before construction please check the received parts against the parts list as it is more difficult to resolve issues during the construction stage.

**All parts of the log cabin are numbered.**

*Lincoln 6x10 68 mm*

Position	Name	B width mm	H Height mm	L Length mm	Q.
003.	Foundation treated bearer	-	-	4164	32
003a	Foundation treated bearer	-	-	5813	4
007.	Support for the second floor	-	-	2841	16
008.	Floor board (Tongue and Groove)	-	-	2716	46.1 m <sup>2</sup>
008a	Floor board (Tongue and Groove)	-	-	2946	
008b	Floor board (Tongue and Groove)	-	-	2672	
008c	Floor board (Tongue and Groove)	-	-	2902	
009.	Floor strips	-	-	1801	12
009a	Floor strips	-	-	2301	8
009b	Floor strips	-	-	2861	16
010.	Strip (for inside roof)	-	-	29160	1
014.	Impregnated and planed terrace decking	-	-	966	5,7 m <sup>2</sup>
017.	various wall log	68	135		
019.	Floor board for second floor	-	-	3542	46.8 m <sup>2</sup>
019a	Floor board for second floor	-	-	4542	
035.	Gabel fastening element	-	-	2075	12
035a	Gabel fastening element	-	-	1430	12

036.	Support for double roof	-	-	4562	8
036a	Support for double roof	-	-	3562	8
037.	Roof board	-	-	4397	156 m2
037a	Roof boards	-	-	2070	
037b	Roof boards	-	-	1430	
039.	Fascia board	-	-	4417	4
039a	Fascia board strip	-	-	4427	4
039b	Roof strip	-	-	2794	8
042.	Balcony rail	-	-	2845	8
042a	Balcony rail	-	-	2470	4
042b	Balcony rail	-	-	2130	4
042c	Balcony post	-	-	990	6
042d	Balcony post	-	-	340	4
042e	Balcony floor board	-	-	966	11 m2
042f	Balcony rail strip	-	-	2130	4
044.	Singe doors	A 850X1860(double glazed)			5
045.	Single windows	C 700X910(double glazed)			5
045a	Double windows	C 1380X910(double glazed)			3
046.	Single door strip (horizontal)	-	-	950	20
046a	Single door strip (vertical)	-	-	1830	20
046b	Single window strip (horizontal)	-	-	800	20
046c	Double/Single window strip (vertical)	-	-	880	32
046d	Double window strip (horizontal)	-	-	1480	12
049.	Frame for single door	-	-	920	10
049a	Frame for single door	-	-	1860	10
049b	Frame for single window	-	-	665	10
049c	Frame for single/double window	-	-	910	16

<b>049d</b>	<b>Frame for double window</b>	-	-	<b>1346</b>	<b>6</b>
<b>061.</b>	<b>Corners for balcony post/ gable fastening elements</b>	-	-	-	<b>80</b>
<b>053.</b>	<b>Plug for wall</b>	-	-	-	<b>461</b>
<b>054.</b>	<b>Metal staples for wall</b>	<b>6</b>	<b>5</b>	<b>12</b>	<b>46</b>
<b>055.</b>	<b>Stairs</b>	-	-	-	<b>1</b>
<b>058.</b>	<b>Rhombus</b>	-	-	<b>135</b>	<b>8</b>
<b>070.</b>	<b>Door furniture</b>	-	-	-	<b>5</b>

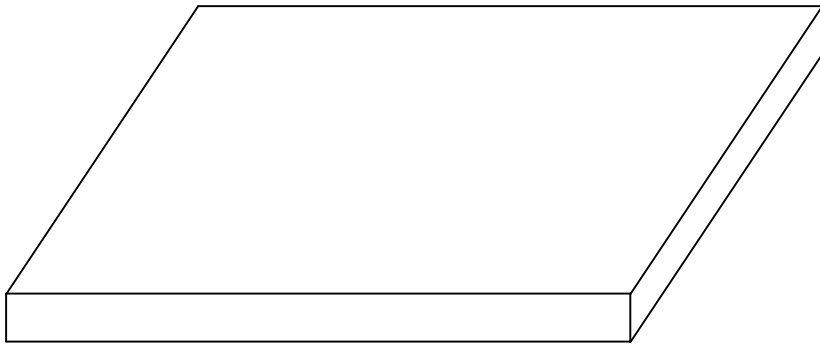
## Assembly guide Lincoln 6x10

Assembling this Log Cabin “Lincoln 6x10” should take place during dry weather only. If it starts to rain during the assembling process, the wood should be covered over.

After completion, the cabin should be immediately protected with an appropriate paint or wood treatment.

Before erecting this cabin it is important to make a firm base, ideally using concrete or concrete slabs.

It is very important that the base corners must be at right angles and it is completely level. Unless in the wall between windows and doors can be found space, in consequence water can get into the cabin.

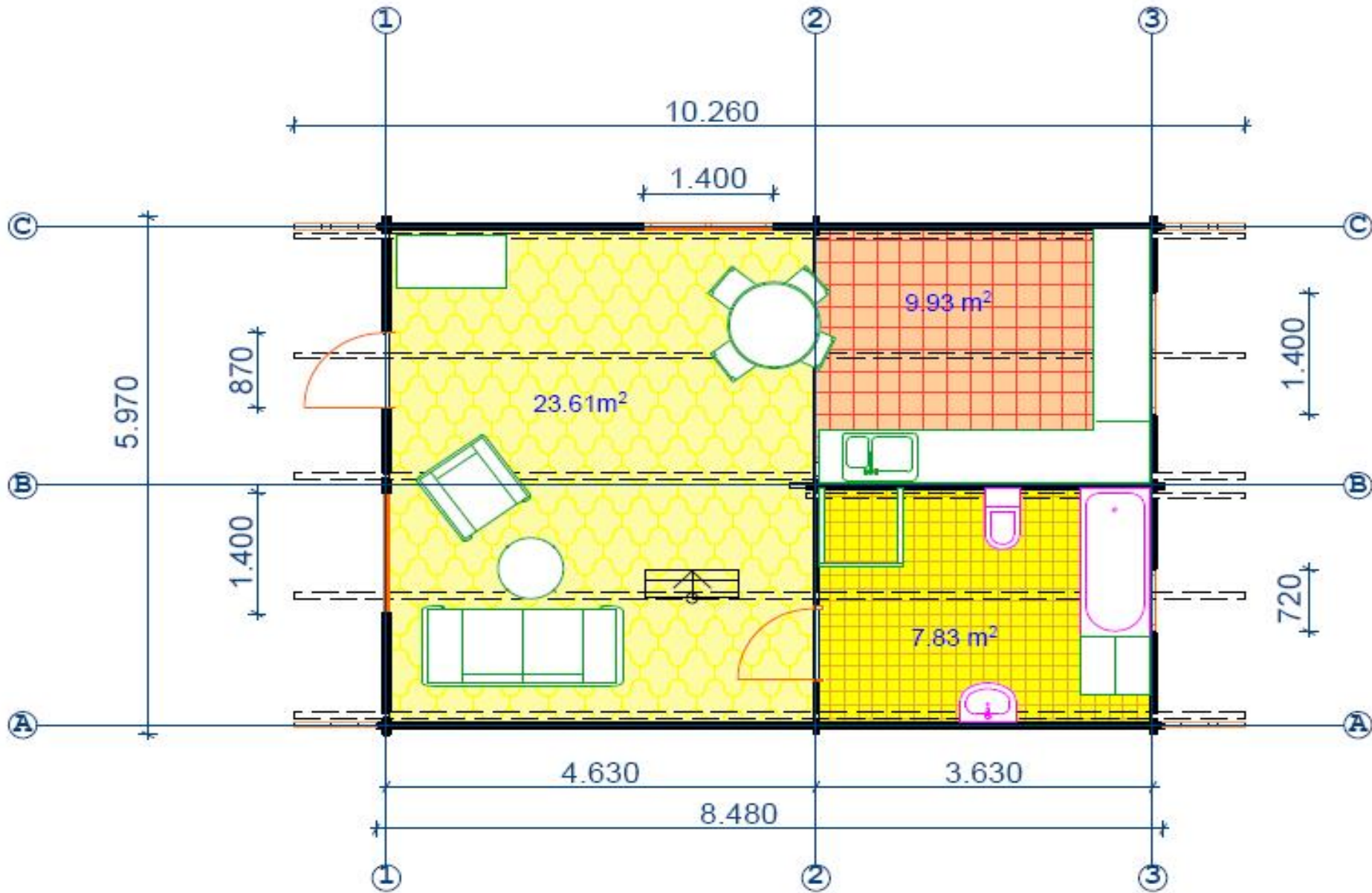


After completing the base the bearers, Pos. 003 are put into position following the Installation Guide diagrams, and then bolted into position.

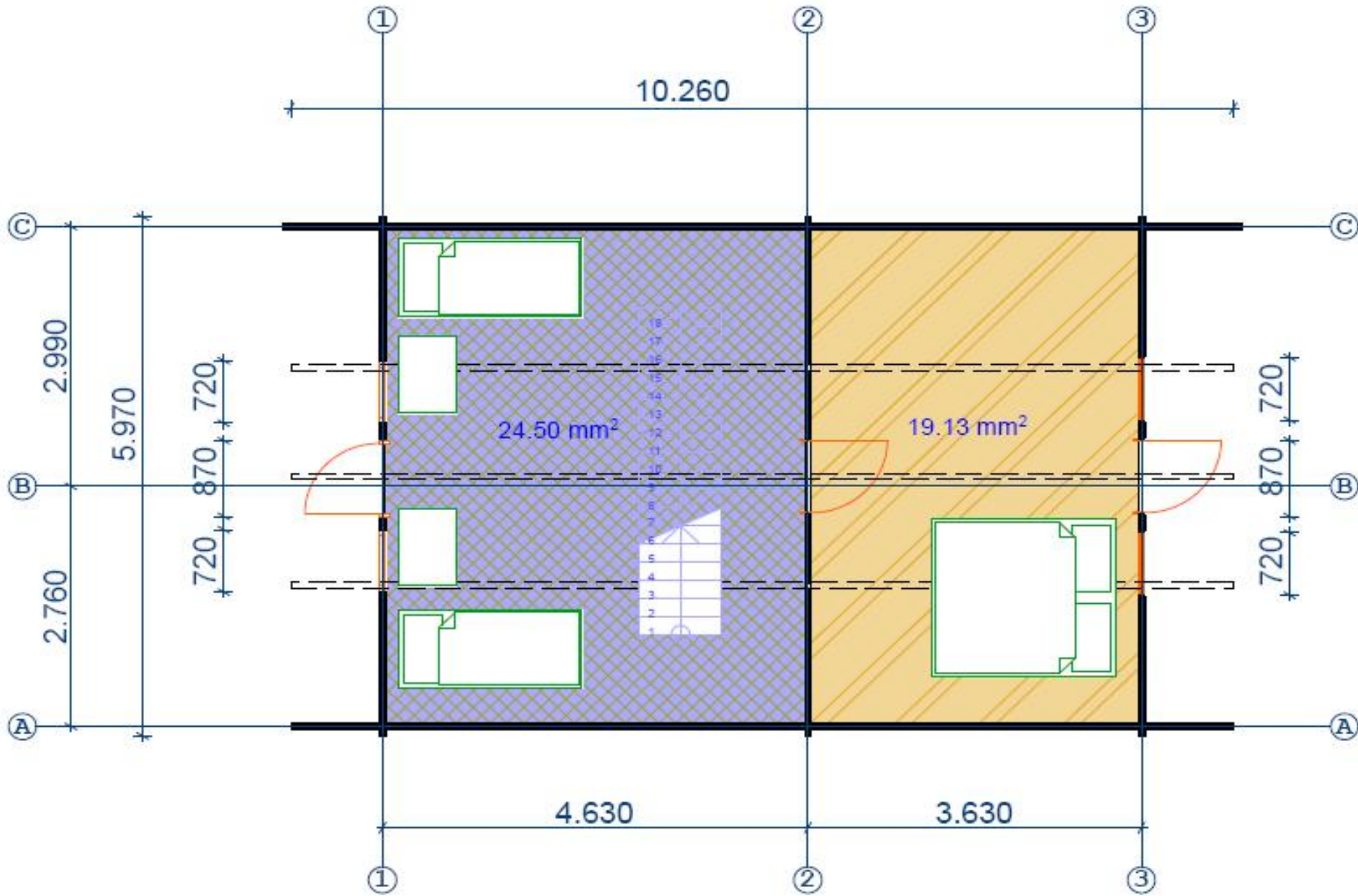
**The space between foundation treated bearer must be kept exactly how is shown at the Foundation plans (according to the picture at page 6).**



The first floor plan



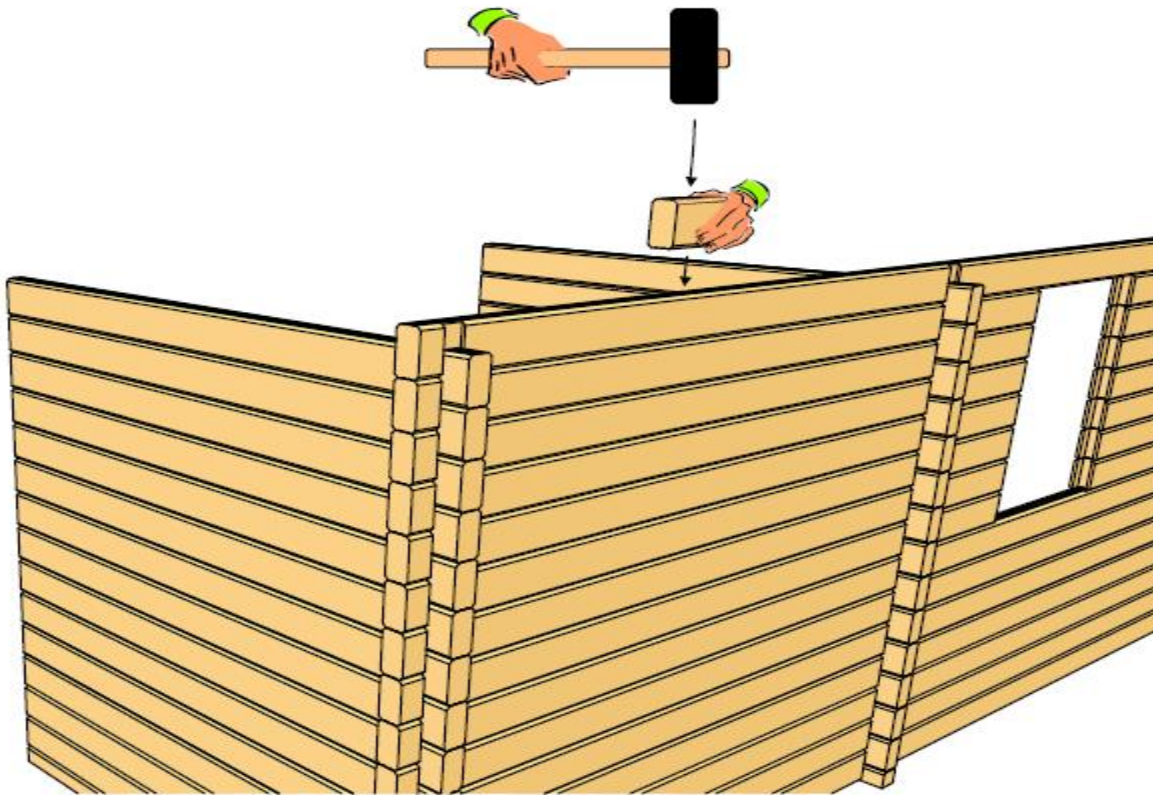
The second floor plan



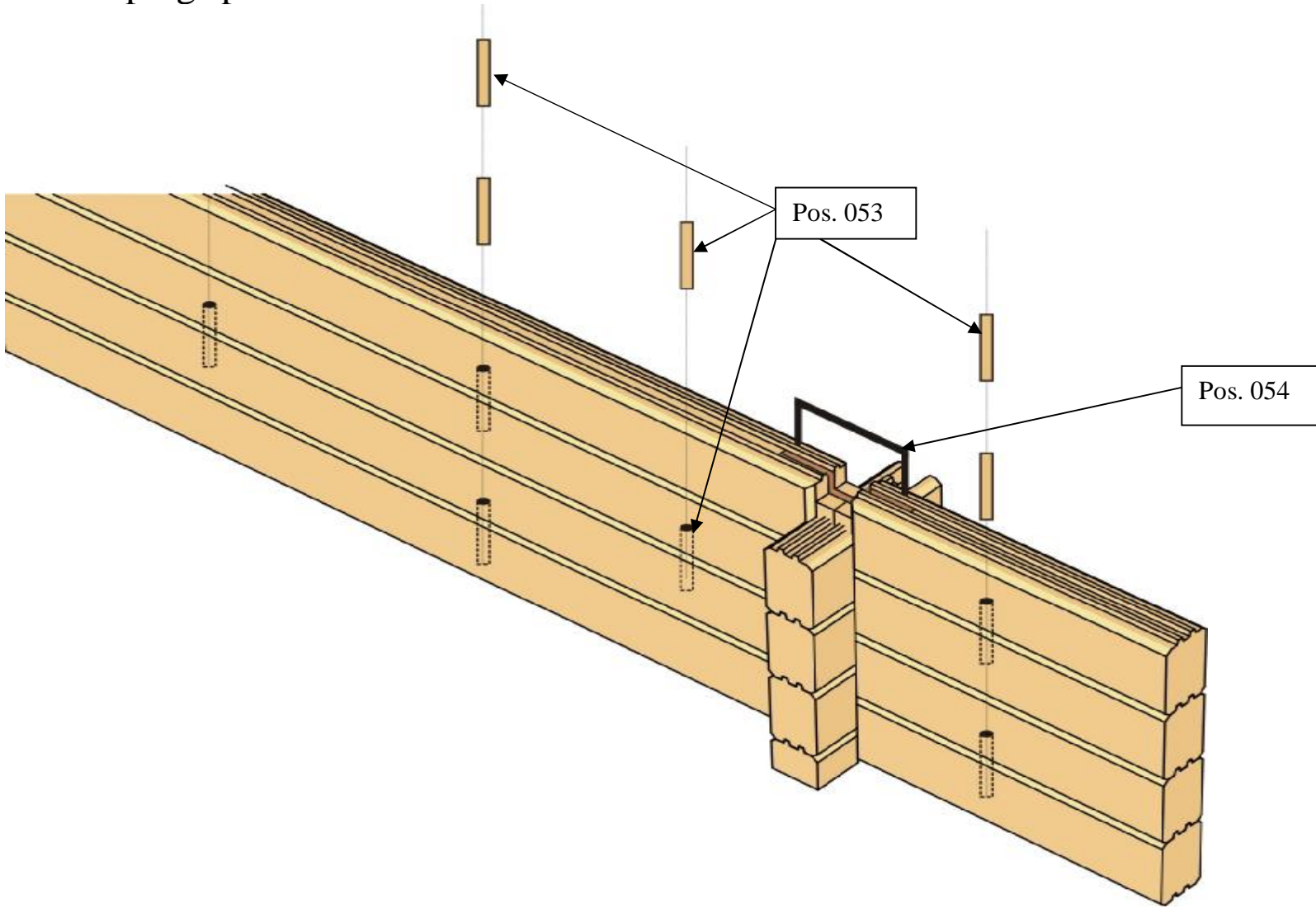
It is advisable to use a spirit level during the construction of the cabin. Using the Installation guide together with the Parts List for reference you can start erecting the walls.

Beginning with part No. 1-A-12, 1-A-23, 1-B-23, 1-C-12, 1-C-23 for the walls and following the installation Guide, fit the boards' one on top of the other. Ensuring the corners lock. Again it is advisable to use a spirit level during this process.

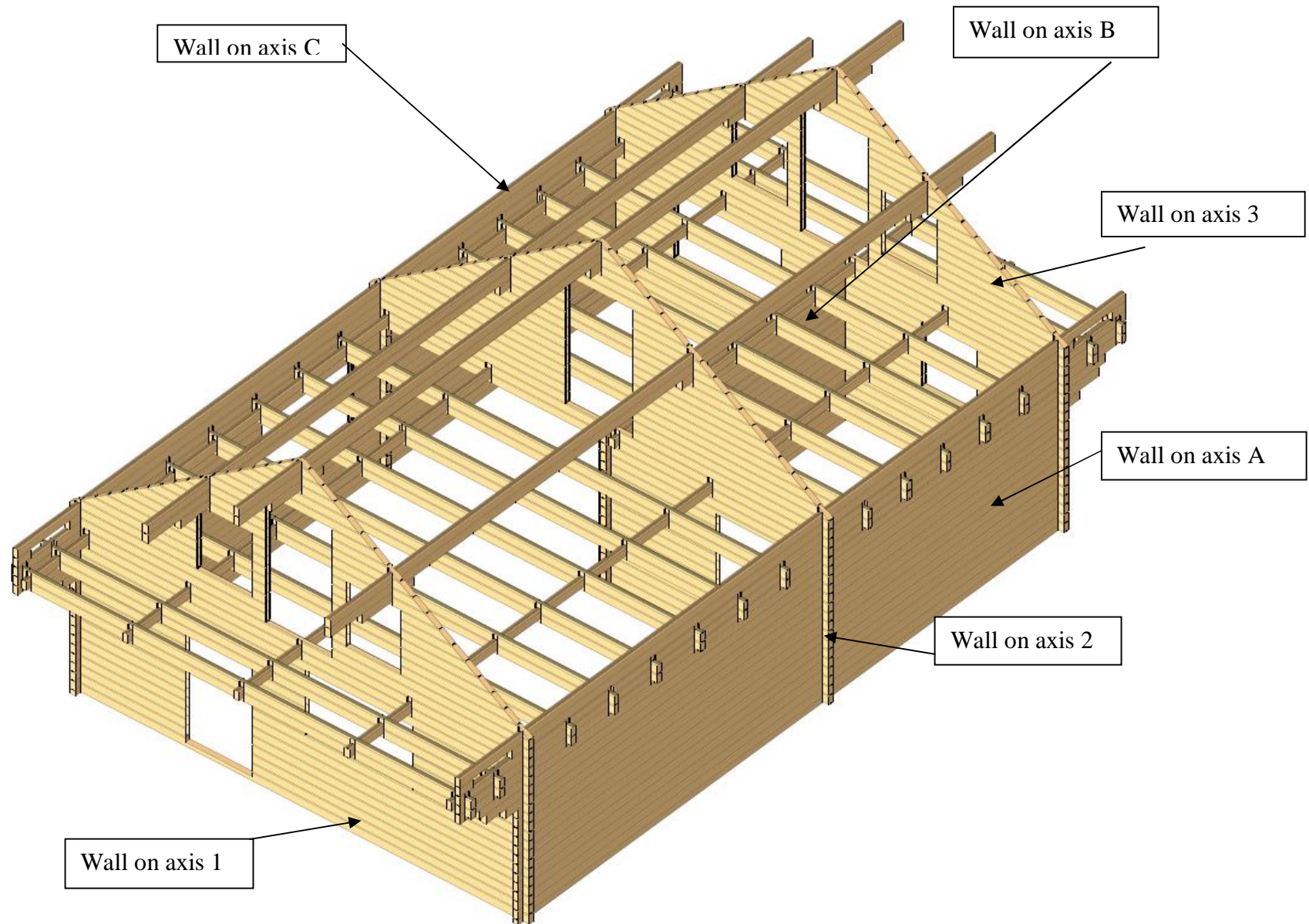
**ATTENTION:** In the package you will find some boards for hammering wall boards. Don't hammer directly to the wall board just with scutch. Please do it according to the picture.

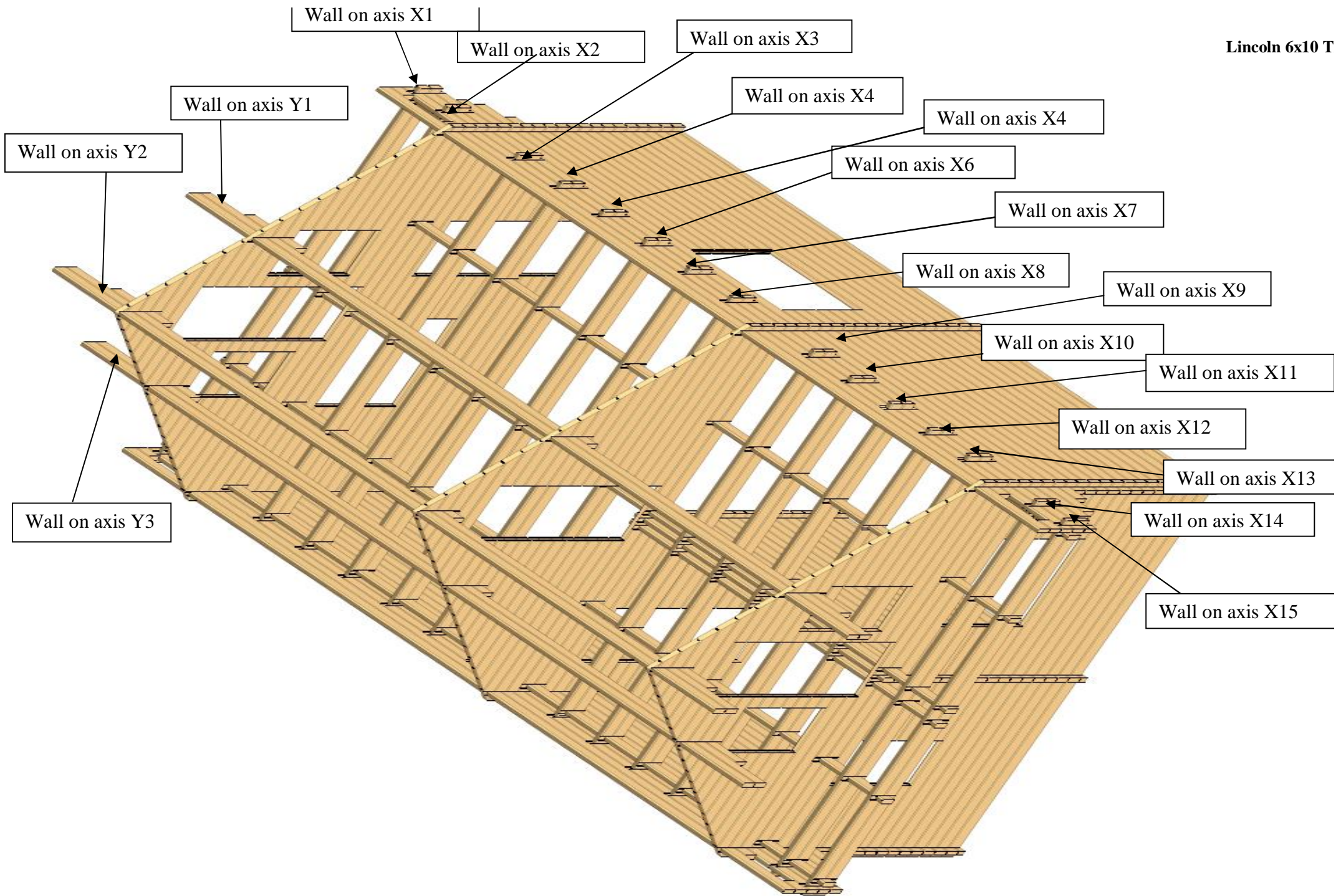


Please join punctured timbers with pos. 054 and the rounds of wall logs in the vertical direction must be knit with wooden plugs pos. 053

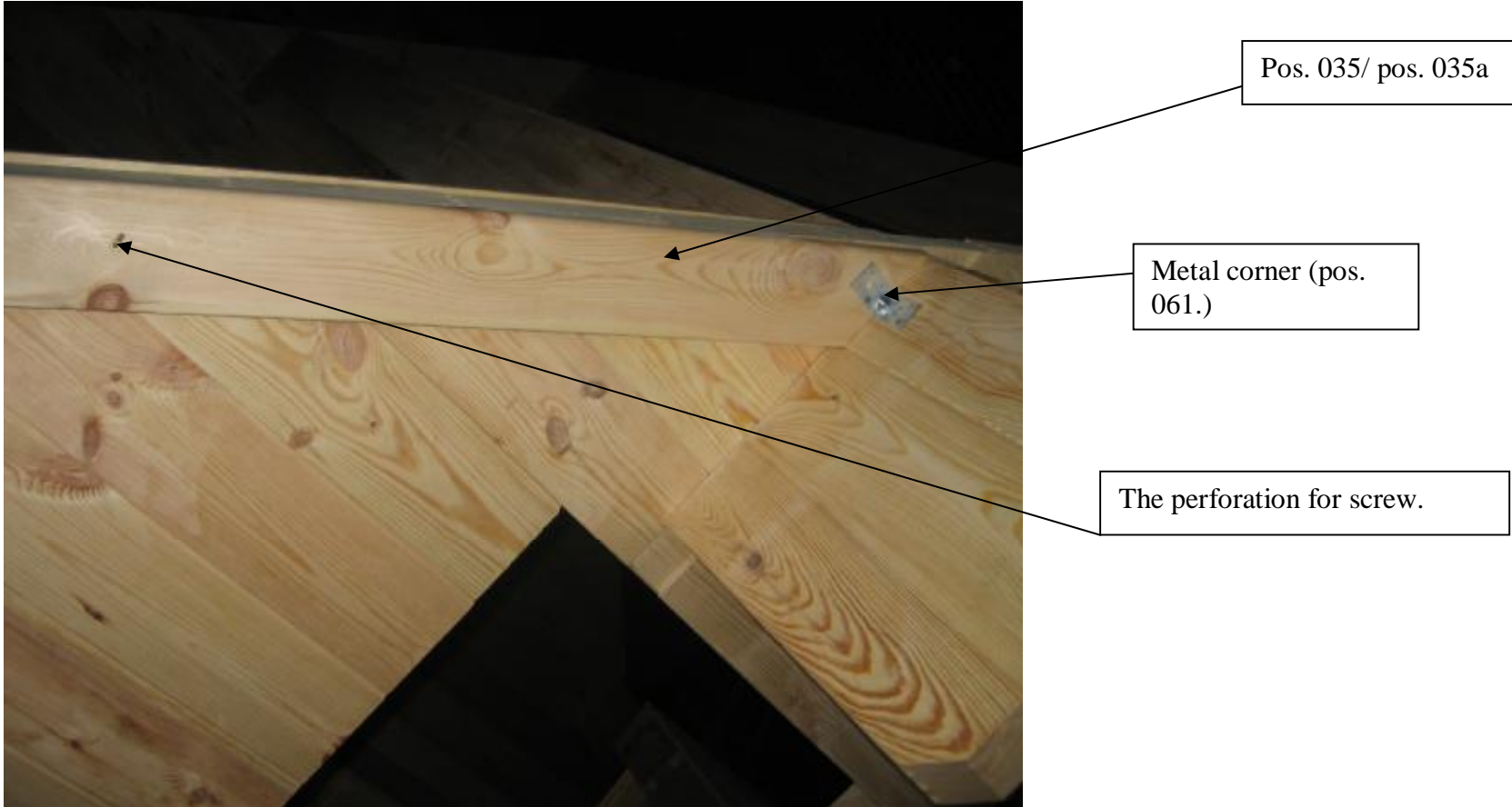


All parts of the log cabin are numbered.



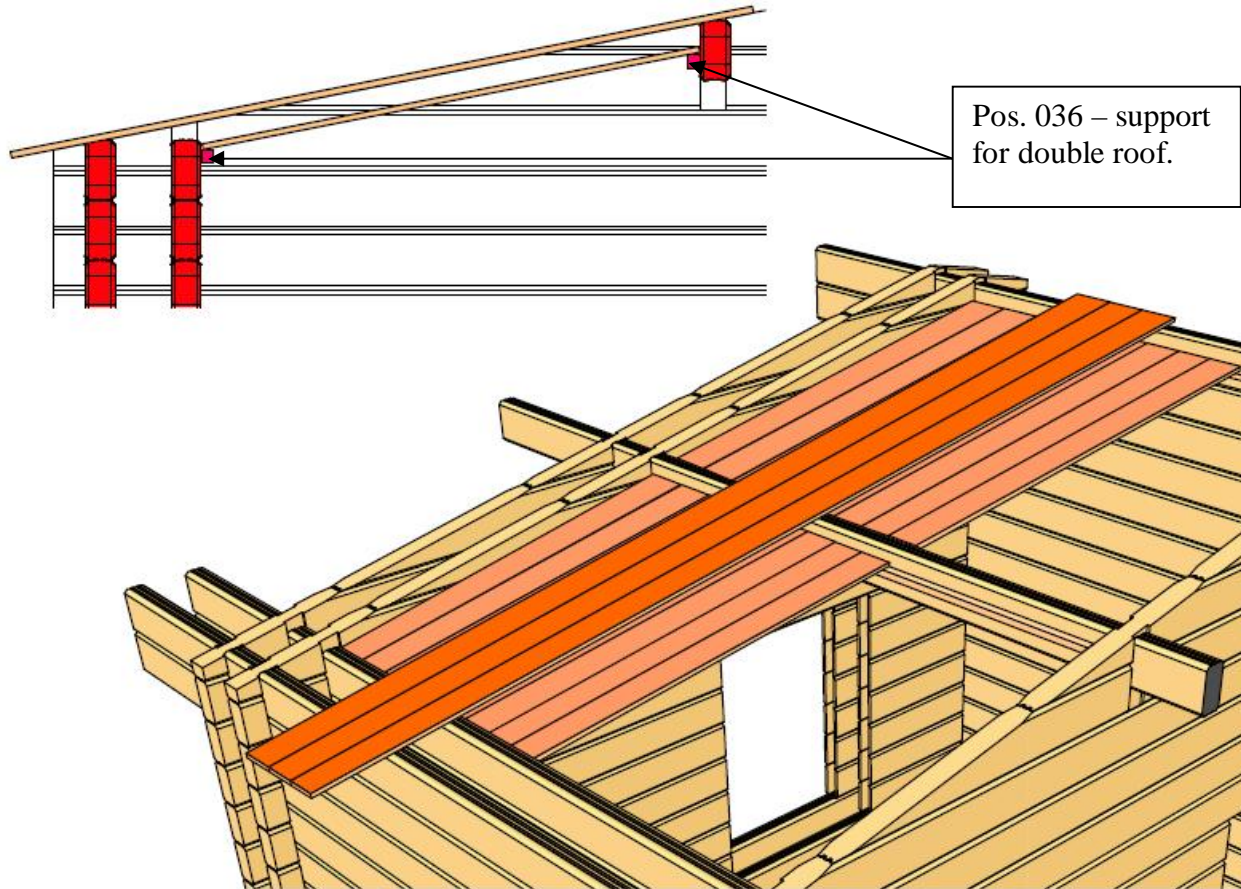


When the external walls reach the height of the gables the doors can be installed. Now you can position the pre-fabricated gable, part No. from 1-1-CY4, 21-1-(2), 21-1-(3), 21-1-Y5A to 38-1-Y6 from 21-2- CY1, 21-2-Y3A to 38-2-Y6 from 21-3-CY4, 21-3-(2), 21-3-(3), 21-3-Y5A to 38-Y6. Then the gable is in position you must strengthen it with gable fastening element pos. 035 and pos. 035a The gable fastening element must be screw in the down of the perforation to the gable. The metal corner must strengthen roof joist with gable. According to the picture.



When the gable is in position the roof joists can be put in to place. This is followed by the roof boards' pos. 037a, 037b, 037 which are screwed o  
ailed into place. This process should be done working from the front to the back.

Please see at the picture below how you must put double roof. On the wall boards you must set support for double roof pos. 036 and 036a then  
ail roof boards.

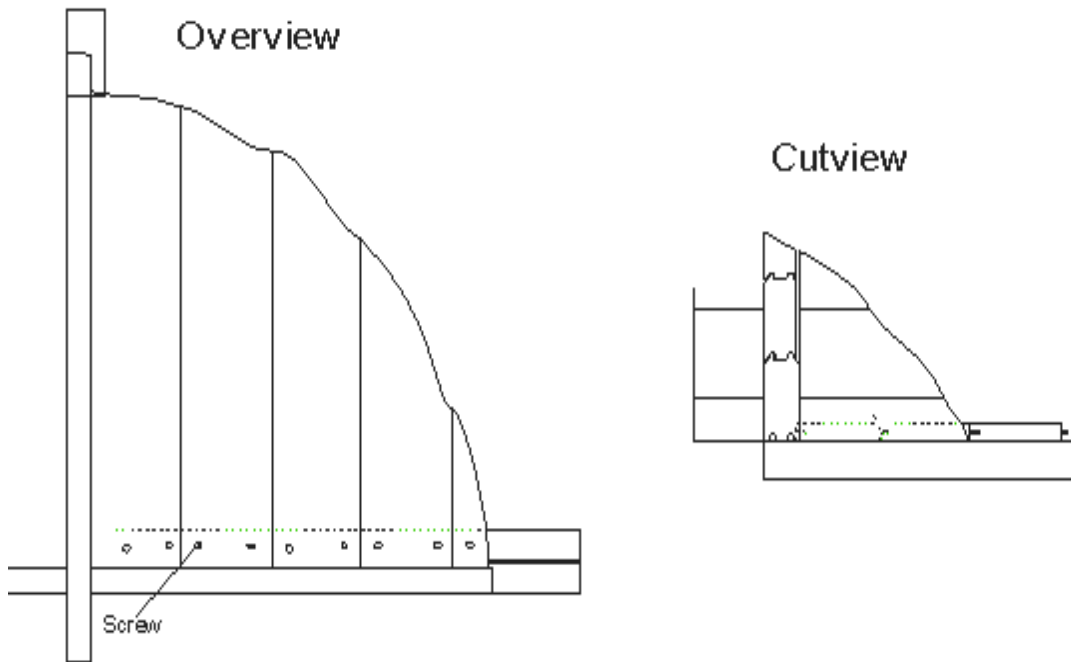


For fitting the roof boards we recommend using roof board / mdf screws about 4, 5-5 cm in length. Please ensure that 2 screws are used to secure each individual board. Additional screws / roof tacks can be used to secure the middle of the board to the side roof joists for extra security.

As soon as the roof is installed it should be sealed immediately with roofing felt and/or Bitumen tiles – which are supplied as optional extras.

When the tiles/felt is in place the border for the gables and eaves Pos. 039, 039a and 039b can be screwed or nailed into place.

Floorboards pos. 008 is fitted last. These are screwed or nailed onto the bearers' pos. 003. The roofing and flooring is commercial quality tongue and groove. The smooth planed side of the flooring boards should be placed upper- most.



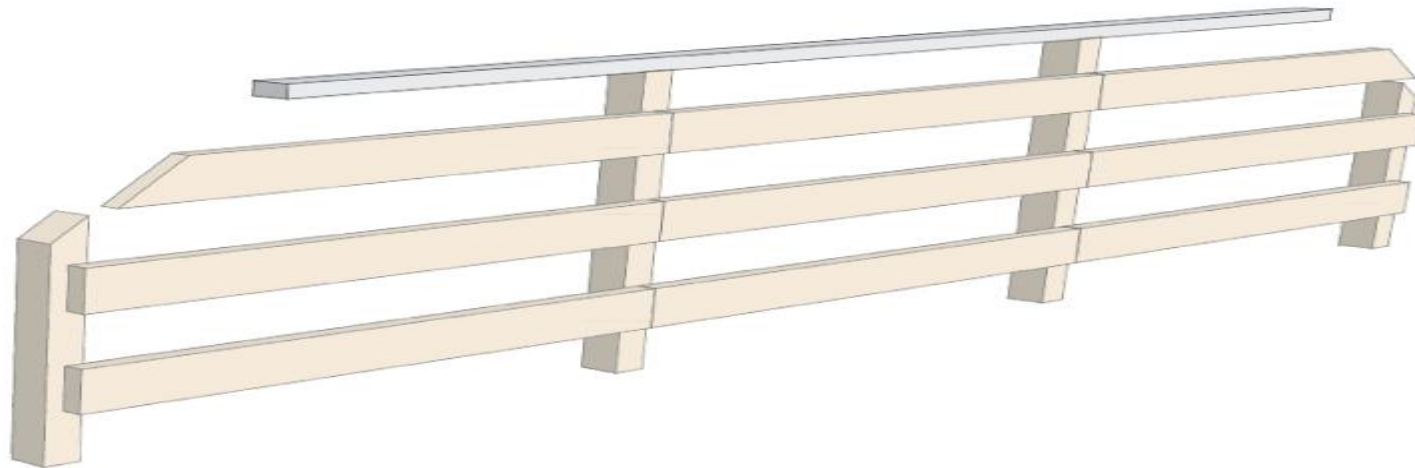
**ATTENTION:** Before you start the mounting the first floor boards, please pay attention to the specification on the page 2.

before you start the mounting the second floor boards, firstly you must screw Support for the second floor (pos. 007.). According to the picture.



Pos. 007

*The method of the balcony mounting:*



## Doors and windows installation

1 step: Firstly from outside you have to put the window evenly the wall, in order to set the window/ door strip pos. 046 (pos. depends on the window/door size).According to the picture.

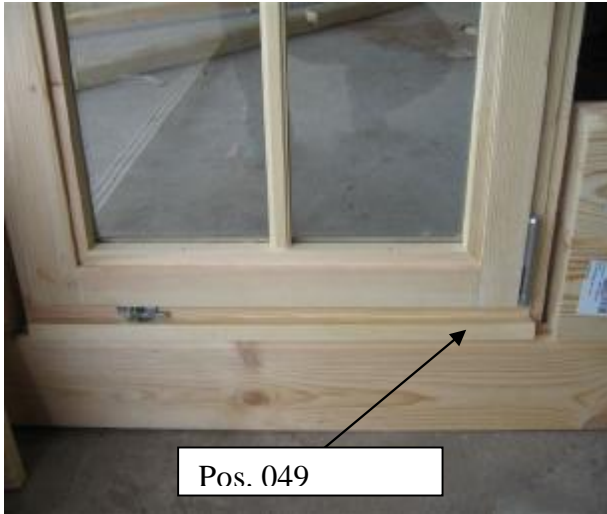


**Pos. 046**

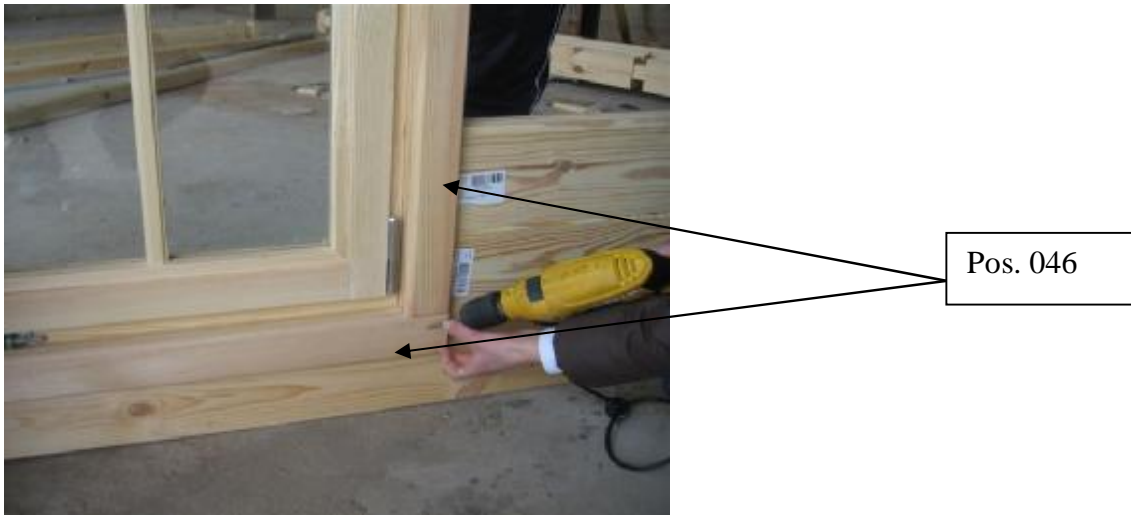
step: pos. 046 must be screw. According to the picture.

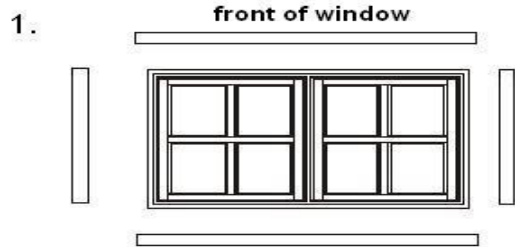


step: pos. 049 must be put in the place from inside step by step. Firstly you have to put down and up, then in the both sides. According to the pictures.

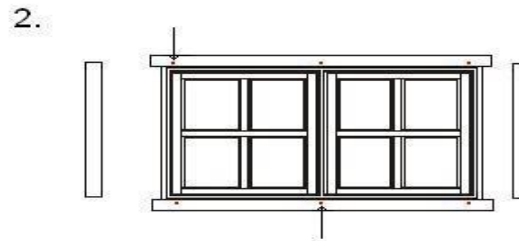


step: pos. 046 must be screw from inside. According to the picture.

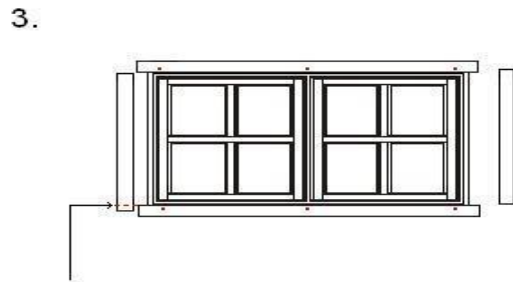




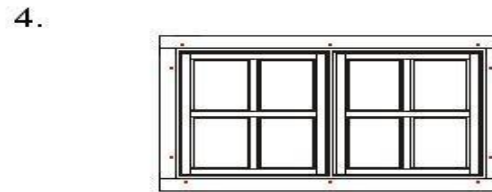
lay window frame on a level surface  
lay four pieces of frame around window



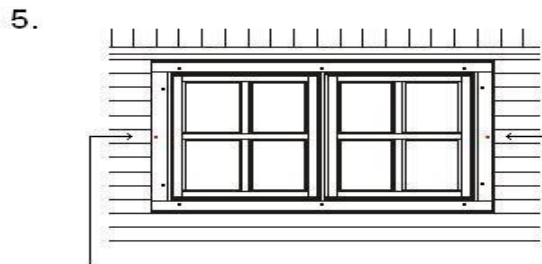
screw top and bottom pieces to  
window frame as shown



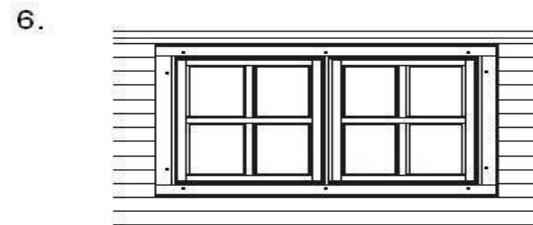
cut side pieces to fit as necessary, then  
screw to frame as before



all pieces attached to front of window frame



offer up window to cabin and screw in  
either side to cabin wall to hold in place



go into cabin and repeat attaching the pieces  
to the window frames to secure windows

Windows can be opened in one of two ways: firstly wide side to side action with window fully open. Secondly by means of a ventilation catch in order to allow a small amount of airflow into cabin.





Ventilation – please ensure that the window catch lever is in the right hand position.

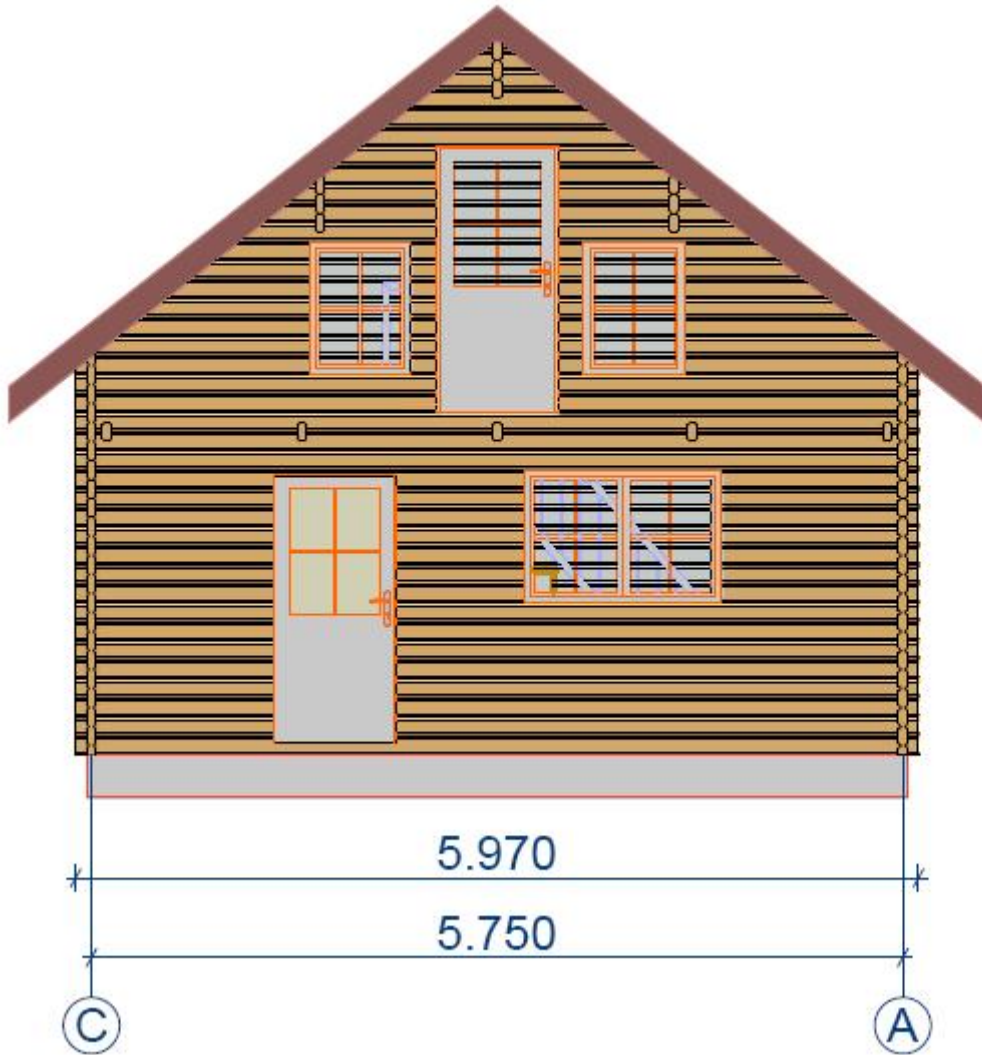


Slowly release the catch at the top of the window.



The window will then tilt slightly inwards at the top for ventilation.

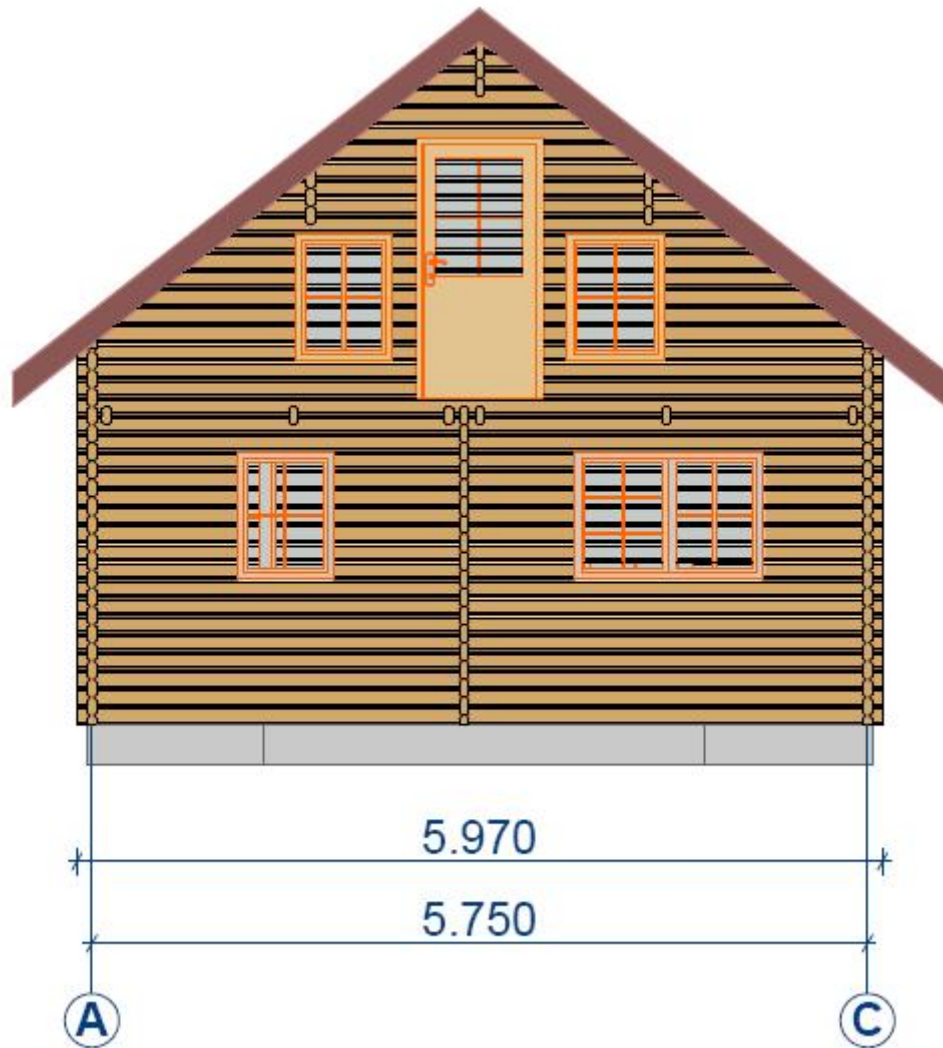
**Please attach the wind boards provided for the door and window surrounds to the window/door frame only. Do not attach direct to the cabin walls in order to allow the cabin wall to settle once built.**



▽ +5.318

▽ +2.359

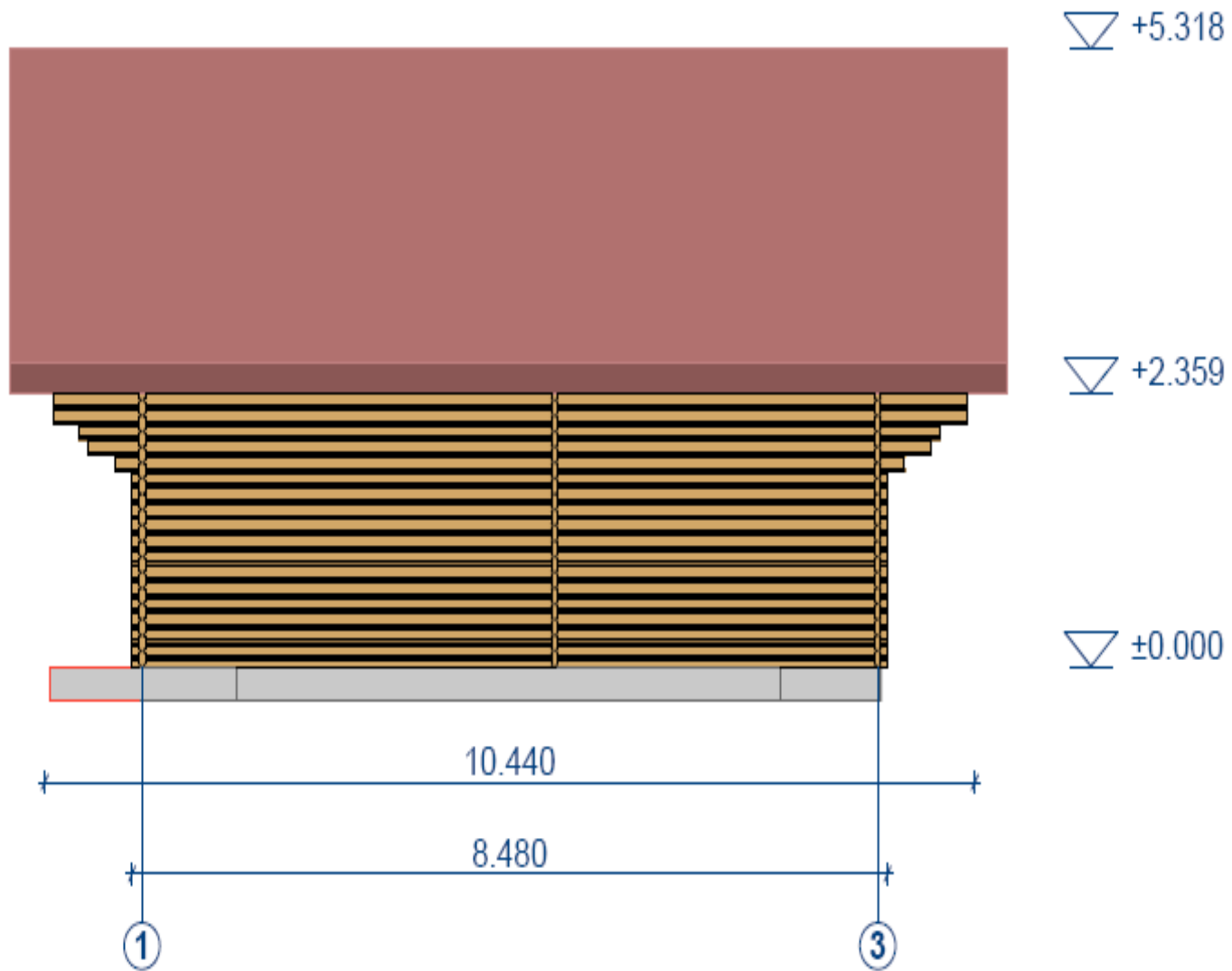
▽ ±0.000

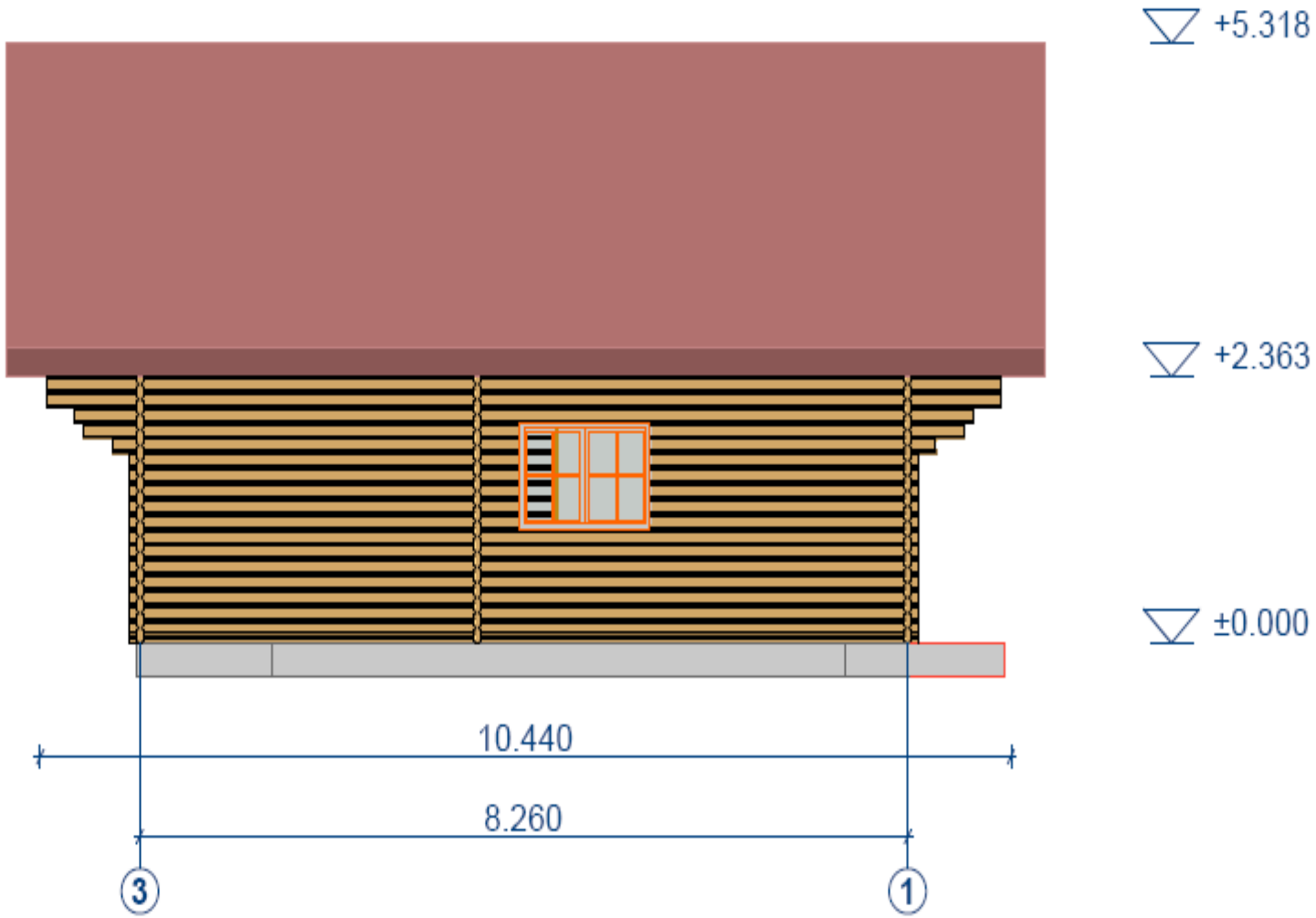


▽ +5.318

▽ +2.363

▽ ±0.000





please note:

Wood is a natural material, which comes with differing textures and colour nuances. These form part of the appeal and natural attraction to this product but also mean aesthetic variations.

Complaints:

If a cause for complaint should arise please follow this procedure:

Inform your retailer and return your control list, describing the problem and making note of any parts nos. that may be damaged. As soon as we receive notification of a complaint we shall do our best to resolve the matter as quickly as possible.

Warranties are limited to the replacement of incorrect materials.

We trust you enjoy your Log Cabin.

## LOG CABIN SHINGLE TILE INSTRUCTION

### ATTENTION:

**We are not responsible for water leakages due to incorrect tile installation or improper preparation of the roof deck. Please therefore read these instructions carefully. If you have any installation questions please ask us before starting.**

Sometimes a small deviation in colour of the tiles occurs between tiles in the same or different packs. This is not a defect of the material and is actually designed to increase the decorative beauty of the completed roof. In order to reduce colour difference during installation of the tiles, it is recommended to mix tiles from packs at random in order to create a mixed colour effect.

### Storage:

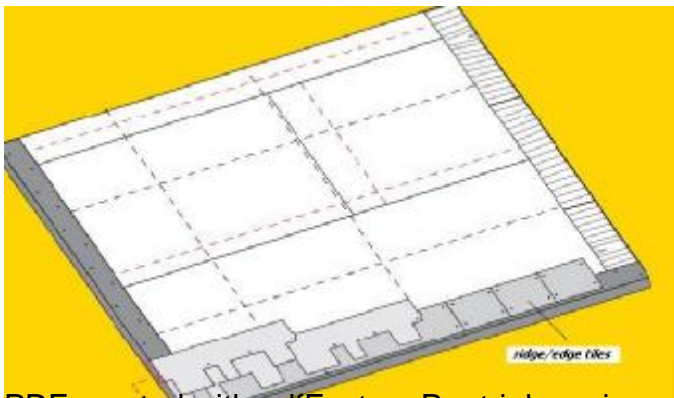
Full pallets of tiles cannot be stored one on top of the other, otherwise this can compress the tiles into sticking to one another before use. In order to avoid shingles sticking to each other in a pack they should be protected from direct sunlight and any direct heat source. Each pack should be turned and shaken before opening, this helps to separate the shingles from each other.

It is not recommended to walk on the roof in hot/sunny weather because the cover might be damaged. Special ladders should be used for this purpose.

### Usage of materials for roofing cover:

Each pack of bourne or hexham tiles contains 3 m<sup>2</sup> of tile coverage (including overlapping). Each pack of ridge tiles contains 5m<sup>2</sup> of tile coverage (including overlapping).

When calculating the amount of materials needed for roofing cover it is necessary to evaluate the quantity of tiles required depending on the complexity, degree of slope and size of the roof. Please remember to calculate extra tiles required for wastage (between 5 – 15% extra) as it is always better to have too many than too few tiles. Extra spare tiles, if stored correctly, can be used to repair any areas of damage in the future.

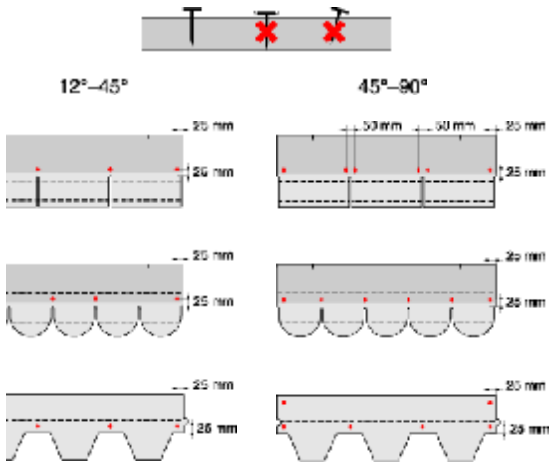


Installation of bitumen shingles: Initial row (tiles of ridges/cornice):

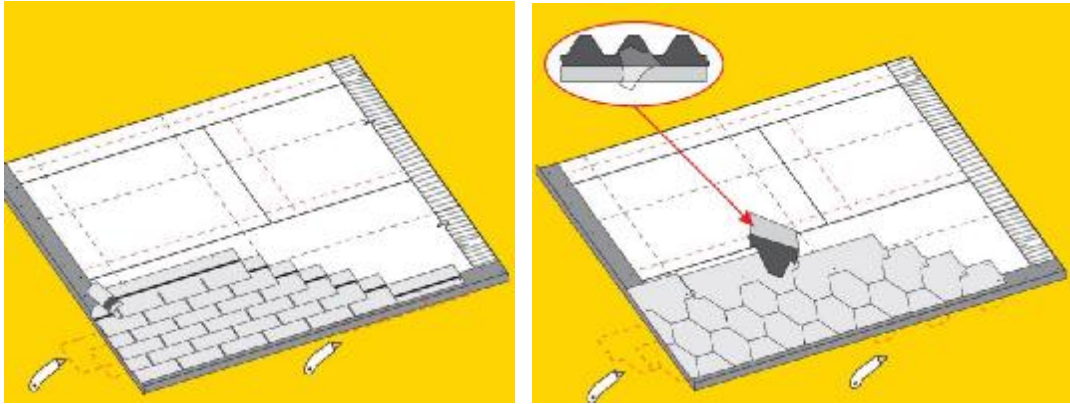
ridge/cornice tiles or the usual tiles (with the jagged edge cut off) are used for the initial row of tiles along both the eaves of the roof as well as the pitched cornice at the top.

The silicon film should be removed from the under side of the tile prior to installation.

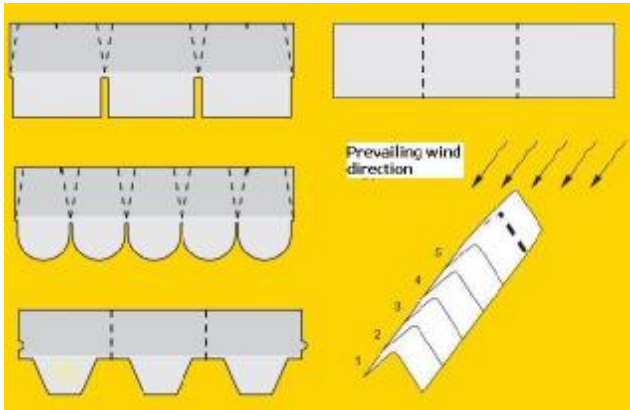
Every tile should be nailed to the roof boards with wide headed galvanized roof tack nails. The number of nails depends on the pitch or slope of our roof. It is very important not to over hit the nails. They should be nailed in such a way that the head of the nail head is flush with the tile and not below the surface. The head of the nail should not puncture the surface of the shingle tile.



The nails are put 2 – 3 cm from the edge of the tile. Picture on the left indicate the number of nail needed and where they should be applied at certain roof angle. The picture shows the topside of the tile, and the dotted line indicates the place of the adhesive bottom layer.

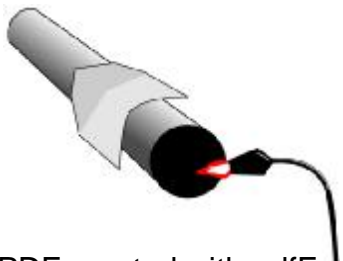


Ridge/cornice tiles should be cut into three parts at the places of perforation and laid in a straight line with an overlap of 3 – 5 cm. They are fixed with two nails on each side of the slope.



Installation should be performed against the prevailing direction of the wind.

**ATTENTION:** if ridge – cornice tiles are installed at the outside temperature lower than 10°C it is recommended to bend them on a heated 10 cm diameter tube in order to avoid cracks. (See the picture on the left)



Ventilation:

The durability of the roof construction is longer if the roof has proper ventilation, especially over the usable attic.

Tile Patterns:

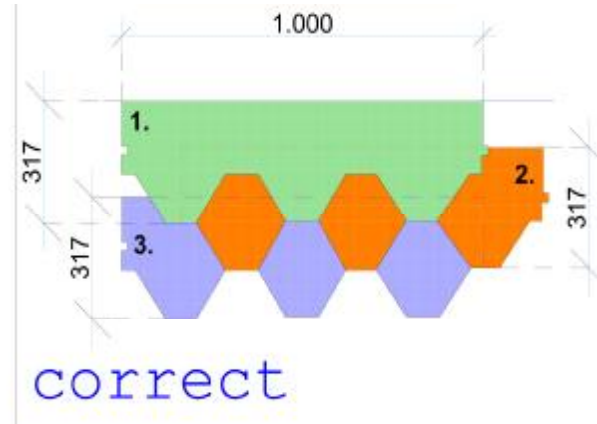
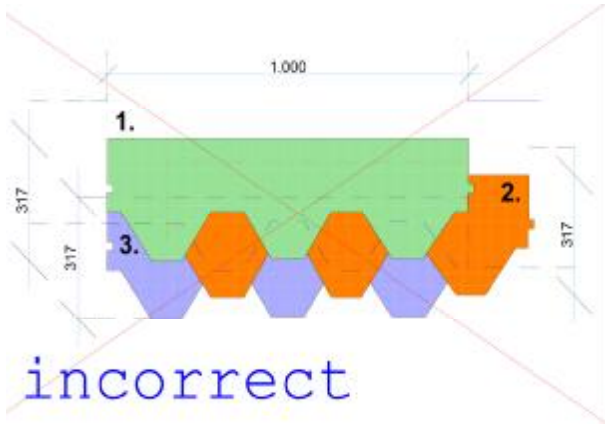
Please make sure that the individual tiles are NOT overlapped to cover the darker colour section. Please refer to the pictures for the correct spacing of tiles. If you assemble the tiles with a larger overlap than recommended you will not have enough tiles to complete your roof. We provide the correct quantity of tiles in order to cover your roof according to correct assembly.

We strongly recommend to use wide headed (up with 15-19 mm long) nails to fix the bitumen tiles.

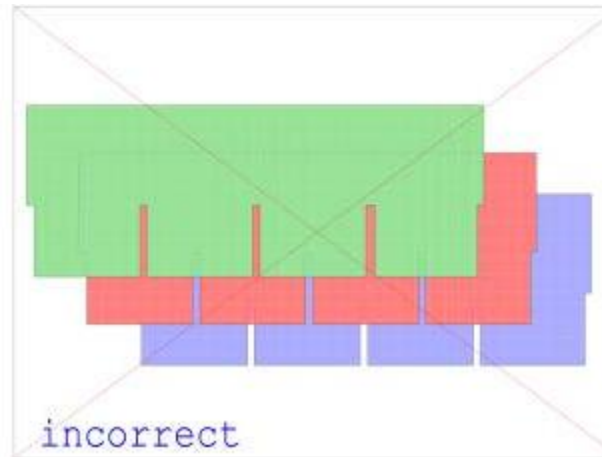
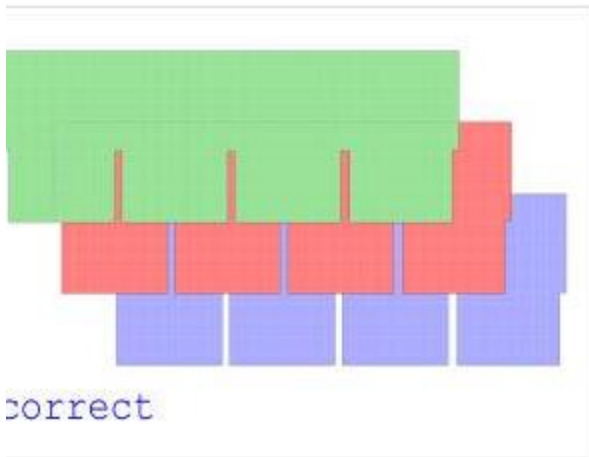
If you are going to put the tiles at lower than +15 degrees outside temperature, please preheat black sealing belt zones or use extra mastics to ensure waterproofing. In this case also recommend to keep tiles in warm temperature (inside) for 24 hours before installation.

The cost of extra tiles and delivery will be paid for by the customer.

### IEXHAM TILES PATTERN



### BOURNE TILE PATTERN



If you have any questions about the installation process of your tiles please call to ask before starting.

### **ATTENTION:**

**We are not responsible for water leakages due to incorrect tile installation or improper preparation of the roof deck. Please therefore read these instructions carefully. If you have any installation questions please ask us before starting.**

Attention: If in the list of details you found 4 peaces rhombes, two must be set at the front and at the back of house and the last two on the roof trips joint. If you found just two rhombes in the list of details such being the case you must put them at the front and the back of the house according to the picture).

